



U.S. SENATOR BOB CASEY AND
LEHIGH UNIVERSITY WELCOME YOU TO

**Pennsylvania Arts
& Humanities:**

*A Statewide
Convening*

**Zoellner Arts Center
at Lehigh University**

BETHLEHEM, PA | NOVEMBER 1, 2023

This event is intended to benefit all of Pennsylvania's arts and humanities organizations whose resources were severely impacted by the pandemic.



Program

8:45 AM

CHECK-IN & REFRESHMENTS

Location: Zoellner Arts Center, Main Lobby

9:15 AM

MASTER OF CEREMONIES

Location: Baker Hall

Mark Wilson, Executive Director, Zoellner Arts Center



9:20 AM

GREETINGS

Location: Baker Hall

Robert P. Casey, Jr.,
United States Senator



9:25 AM

WELCOME

Location: Baker Hall

Joseph J. Helble '82,
President, Lehigh University

9:30 AM

EXPERT PANEL CONVERSATION

Location: Baker Hall

Panelists

Mark Silver, Senior Program Officer in the Division of Research Programs, National Endowment for the Humanities

Brandon Gryde, Acting Senior Director, Multidisciplinary Arts and Equity and Director, Presenting & Multidisciplinary Works and Artist Communities, National Endowment for the Arts

Anthony D. Smith, Associate Deputy Director, Discretionary Programs, Office of Library Services, Institute for Museum and Library Services

Moderator

Karl Blischke, Executive Director, PA Council on the Arts

10:30 AM

FIRESIDE CHAT

Location: Baker Hall

Dr. Colleen J. Shogan, 11th Archivist of the United States

Nathan Urban, Provost and Senior Vice President for Academic Affairs, Lehigh University

11:00 AM

COFFEE BREAK

11:15 AM

Morning Breakout Sessions

SECTION 1 ACCELERATING CHANGE

► The State of Arts, Culture, & Humanities: Data-Driven Insights Post Covid

Location: Baker Hall

Panelists

Laurie Zierer, Executive Director, PA Humanities

Karl Blischke, Executive Director, Pennsylvania Council on the Arts

Genna Styles-Lyas, Director of AEP6

Andrea Bakewell Lowery, Executive Director, Pennsylvania Historical and Museum Commission (PHMC)

Moderator

Teresa Dennis, State Director, Office of Senator Bob Casey

► Power Sharing and Placemaking: Exploring Public-Private Partnerships to Address Complex Social Challenges

Location: Butz Lobby

Panelists

Rachel Wenrick, Executive Director for Arts & Civic Innovation, Drexel University

Wes Hiatt, Assistant Professor of AAD, Lehigh University

Anna Smith, Director, Community Action Development Bethlehem

Mary Foltz, Director of Southside Initiative, Assoc. Professor of English, Lehigh University

Moderator

Michael Kramp, Professor of English, Lehigh University

► Advancing Diversity, Inclusion, Equity, Access, and Belonging (DIEAB): Ensuring accessible Arts & Culture Opportunities for All

Location: Goodman Lobby

Panelists

John Orr, Executive Director, Art-Reach

Dana Payne, Director of DEI Initiatives, PCA

Jenny Angell, Project Director PA Museums

Marci Martinez-Howey, Associate V.P. DEI United Way of the Greater Lehigh Valley

Moderator

Stacie Brennan, Curator of Education, Lehigh University Art Galleries (LUAG)

SECTION 2 GRANT SEEKERS FORUM

► Fundamentals of Successful Grant Seeking

Location: Room 121

Kirsten Hubbard, CEO of Ghost Writer LLC

► How To Write A Winning Grant

Location: Room 143

Kate Bullard, Ph.D., Director of Research Development, Lehigh University

► State Resources & Grant Opportunities for the Creative Sector

Location: Room 145

Ian Rosario, Director of Arts Organizations and Programs, PA Council on the Arts

Sarah Merritt, Director of PA Creative Communities & the Creative Economy, PA Council on the Arts

Rusty Baker, Executive Director, PA Museums Investments in Pennsylvania

12:30 PM

ARTS & HUMANITIES POWER LUNCH

▶ **Lunch & Mingle Roundtable Discussions**

Location: Goodman Lobby

▶ **Budgeting for Impact and Financial Sustainability with Your Part-Time Controller (YPTC)**

Location: Butz Lobby

1:45 PM

Afternoon Breakout Sessions

SECTION 1 ACCELERATING CHANGE

▶ **Arts, Humanities, Tourism, and Recreation: Keeping PA Competitive**

Location: Baker Hall

Panelists

Abbi Peters, Founding COO, PA Wilds Center

Patricia Wilson Aden, President & CEO Greater Philadelphia Cultural Alliance

Silas Chamberlin, Ph.D., Chief Strategy Officer at York County Economic Alliance

Johntrae Williams, Executive Director of FACTS

Moderator

Patrick Fisher, CEO, The Greater Pittsburgh Arts Council

▶ **Art as a Social Prescription**

Location: Butz Lobby

Panelists

Ram Bhagat, Founder of Drums No Guns

Jamie Brunson, Executive Director First Person Arts

Jane Golden, Executive Director Mural Arts Philadelphia

Gail Boyd, Gail Boyd Artist Management

Carmen Bell, Senior Director Healthy Aging United Way of Greater Lehigh Valley

Moderator

Dominic Packer, Professor of Psychology and Associate Vice Provost for Research, Lehigh University

▶ **Advancing Diversity, Inclusion, Equity, Access, and Belonging (DIEAB): Innovative Workforce Development Partnerships and Programs**

Location: Goodman Lobby

Panelists

Morgan Overton, Create PA: Film & Theatre Works

Dan Law, Associate Director of the Andy Warhol Museum

Alison Shott, Community Engagement Advisor, Federal Reserve Bank of Philadelphia

Moderator

Laura Galaida, VP and Institutional Manager of Client Services at Truist

SECTION 2 GRANT SEEKERS FORUM

▶ **Fundamentals of Successful Grant Seeking**

Location: Room 121

Kirsten Hubbard, CEO of Ghost Writer LLC

▶ **How To Write A Winning Grant**

Location: Room 143

Kate Bullard, Ph.D., Director of Research Development, Lehigh University

▶ **State Resources & Grant Opportunities for the Creative Sector**

Location: Room 145

Ian Rosario, Director of Arts Organizations and Programs, PA Council on the Arts

Fadia Halma, Regional Director, PA Department of Community & Economic Development

Rusty Baker, Executive Director, PA Museums Investments in Pennsylvania

2:55 PM

CLOSING REMARKS

3:00 PM

EXHIBITION & OUTDOOR SCULPTURES TOUR WITH LUAG

After the formal program concludes, participants are invited to walk the grounds and tour the Reading Between the Lines exhibition by Lucy Gans in Lehigh University Art Galleries (LUAG) Main Gallery.

RESOURCE TABLES

Location: Zoellner Arts Atrium

- ▶ **PA Humanities**
- ▶ **Pennsylvania Council on the Arts**
- ▶ **Greater Philadelphia Cultural Alliance**
- ▶ **PA Presenters**
- ▶ **Metris Arts Consulting**
- ▶ **Greater Pittsburgh Arts Council**
- ▶ **Lehigh Valley Arts and Cultural Alliance (LVACA)**
- ▶ **UArts Philadelphia**

Panelists



Jenny Angell

Jenny Angell (she/her/hers) is Project Manager for the Accessibility Excellence project, an IMLS National Leadership Grant for Museums partnership between PA Museums and the Pennsylvania Historical & Museum Commission's Bureau of Museums and Historic Sites. Previously, she was an Associate Educator at the Detroit Institute of Arts (Detroit, MI) and was part of a cross-departmental team working to improve museum accessibility for visitors with disabilities.



Carmen Bell

Carmen Bell, Senior Director of Healthy Aging for United Way of the Greater Lehigh Valley, envisions a Lehigh Valley that is safe, inclusive and respectful for people of all ages. As an influential member of the Lehigh Valley Alliance on Aging, Carmen participated in the strategic formation of Age-Friendly Lehigh Valley and currently leads the age-friendly initiative in our community. With Carmen's leadership, deep connections and partnerships, the Age-Friendly LV Action Plan was released, making the Lehigh Valley an age-friendly community, certified by AARP and the World Health Organization.



Ram Bhagat

Dr. Ram Bhagat is a longtime educator, arts innovator, peacemaker, and community healer who has been teaching and transforming communities for 35 years. Dr. Bhagat is committed to healing trauma in our classrooms, schools, and communities. Ram is an international conflict resolution trainer, specialist in arts integration, and certified in restorative justice. He is a master teacher of culturally responsive peacemaking circles, racial healing, trauma awareness & resilience, yoga and mindfulness.



Karl Blischke

Karl Blischke has held a variety of senior-level, public positions and has more than 20 years of hands-on experience, and overall managerial responsibility, promoting vibrant and prosperous communities through cultural and economic development. In Pennsylvania, Karl was part of the Pennsylvania Council on the Arts, directing its Arts in Education and Pennsylvania Partners in the Arts programs, which provide unprecedented access to arts funding and technical assistance for the creative industry in the commonwealth's 67 counties.



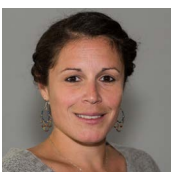
Corey Blum

Corey Blum was appointed Director of Sales at Your Part-Time Controller in 2018. An accountant by trade, Corey has been with YPTC for 15 years, working as an Associate and Manager for YPTC Philadelphia before being tagged to steer the firm's national expansion. He has overseen a fivefold increase in annual new client engagements, building and training a team to handle the explosive nationwide growth in demand for YPTC's services. Corey joined YPTC in 2008 with a desire to help nonprofit organizations after 15 years in private industry as a Controller and CFO. He holds a Master of Business Administration from Drexel University and a Bachelor of Business Administration from George Washington University.



Gail Boyd

Gail Boyd is President of Gail W. Boyd, P.C., an entertainment law firm, and Gail Boyd Artist Management. She is a graduate of De Paul University and De Paul University School of Law. She was a founding partner in Boyd, Staton and Cave, the first African American female law firm in New York. In addition to entertainment law and artist management, Gail is specialist in Racial Equity, Diversion and Inclusion having conducted corporate training sessions for more than 30 years.



Stacie Brennan

Stacie Brennan is the Curator of Education for the Lehigh University Art Galleries (LUAG), where she spearheads collaborations with campus and community partners, as well as free programs that connect with LUAG's collection of nearly 20,000 works of art. In her previous roles as Senior Director of Visual Arts at ArtsQuest in Bethlehem, PA and Director of Education at Main Line Art Center in Haverford, PA, she oversaw 2,000 visual arts classes and workshops for adults and children annually.



Jamie J. Brunson

Jamie J. Brunson, Executive Director of First Person Arts, is an artist/activist using storytelling to build community and catalyze dialogue around important issues, especially those issues impacting the unheard. She has brought storytelling to audiences across multiple platforms for over a decade, including: executive producer of two documentary films, producer of the annual First Person Arts Festival, podcast host, host of WHYY's Commonsense Radio Hour and Podcast series, and COVID Stories—A Digital Memoir. She is regularly featured on national podcasts.



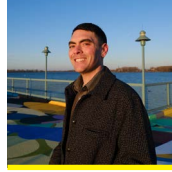
Silas Chamberlin

Silas Chamberlin, PhD, is Chief Strategy Officer at the York County Economic Alliance, a position in which leads economic development planning and implementation for a county of 450,000 residents in south central Pennsylvania. Prior to his role at YCEA, Silas held positions in the economic development and conservation sectors, as CEO of Downtown Inc and Executive Director of the Schuylkill River National Heritage Area. Silas holds a PhD in environmental history from Lehigh University and is the author of *On the Trail: A History of American Hiking*, published by Yale University Press in 2016.



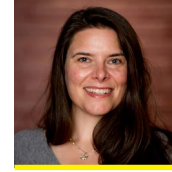
Teresa Dennis

Teresa Dennis is the State Director for U.S. Senator Bob Casey. It is the office's top position in Pennsylvania. As State Director, Teresa oversees and manages the work of Senator Casey's 27 staff members in seven regional offices who work on behalf of Pennsylvanians. Teresa Dennis has served as a senior member of Senator Casey's office since his election in 2006. She spent nearly 11 years as Senator Casey's Deputy Director of Constituent Services and Director of Constituent Services. Prior to her work in the federal government, Teresa served in state government for 17 years. Her first work began with Governor Robert P. Casey in his Office of Executive Secretariat.



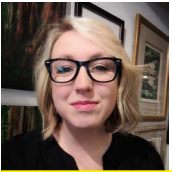
Patrick Fisher

Patrick Fisher is a culture worker and a staunch advocate for inclusivity, accessibility, and equity. He's dedicated himself to working with artists and organizations to demystify the creative process and ensure the value and impact of the arts is experienced broadly. Patrick joined the Greater Pittsburgh Arts Council as CEO in June 2023, following a five-year tenure as the Executive Director of Erie Arts & Culture.



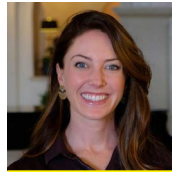
Mary Foltz

Mary Foltz received her doctorate from the University at Buffalo in 2009. She specializes in contemporary American literature with a specific focus on ecocriticism, postmodern fiction and theory, and queer fiction and theory. Her monograph titled *Contemporary American Literature and Excremental Culture: American Sh't* (2020) won the Northeast Modern Language Association Book Award for Literary Criticism of English Language Literature.



Sara Frank

Sara Frank is the Executive Director of the Elk County Council on the Arts, a rural non-profit arts organization in the heart of the Pennsylvania Wilds. Sara has focused her career on the advancement of creative entrepreneurs, rural artisan culture, and the importance of human connection through art. She has served on boards and committees state-wide that intersect art, tourism, and creative entrepreneurs. At ECCOTA Sara oversees grants and art education programs for local artists, a sales gallery representing over fifty artists from the PA Wilds region, and free and low cost art classes and programs for both youth and adults.



Laura Galadia

Laura Galadia is the Director of Client Service for Truist's Foundations and Endowments Specialty Practice. The Practice delivers comprehensive investment advisory, planned giving and fiduciary services to nonprofit organizations. Previously she worked at Sotheby's, as administrator for several decorative art departments, and Charitybuzz, the global leader in online charity auctions. She currently serves as the Treasurer for the Haystack Mountain School of Crafts in Maine and is active on the Strategic Planning, DEAI and Development Committees.



Jane Golden

Jane Golden has been the driving force of Mural Arts Philadelphia since its inception, overseeing its growth from a small city agency into the nation's largest public art program. Under her direction, Mural Arts has created over 4,000 works of transformative public art through community engagement. In partnership with innovative collaborators, she has developed groundbreaking and rigorous programs that employ the power of art to transform practice and policies related to youth education, restorative justice, environmental justice and behavioral health.



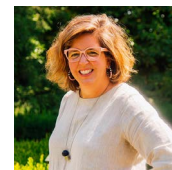
Wes Hiatt

Wes Hiatt, AIA, is an architect and Assistant Professor in Lehigh University's Department of Art, Architecture, and Design. His work is concerned with how architects can help responsibly shape urban change through place-based design research and by forging genuine partnerships between community stakeholders. Wes is the Co-Founder Jaff Hiatt Architecture, a design practice based in Bethlehem, Pennsylvania and Brooklyn, New York.



Marci Martinez-Howey

Marci Martinez-Howey is Associate Vice President (AVP) of Diversity, Equity and Inclusion for United Way of the Greater Lehigh Valley (UWGLV). She has held the position since January of 2021 when the organization created the vital role for the first time in its history. She is passionate about DEI as it impacts all races, ethnicities, gender identities, and socioeconomic backgrounds. Marci is honored to lead UWGLV's DEI strategy, ensuring that the organization remains accountable to its mission and DEI vision.



Sallyann Kluz

Sallyann Kluz is a Pittsburgh-based arts administrator, architect, and urban designer whose practice is situated at the intersection of art and community development. With over 20 years of practice in the Pittsburgh region, her work is focused on the public realm and the people who inhabit it. Her practice includes public art programs and strategies, community engagement, design education, public space design, and neighborhood development strategies. Sallyann is the Executive Director of the Office for Public Art (OPA).

Panelists



**Michael
Kramp**

Michael Kramp specializes in nineteenth-century British Literature, Critical Theory, and Masculinity Studies. He is the author of *Patriarchy's Creative Resilience* (Routledge, 2024) and *Disciplining Love: Austen and the Modern Man* (The Ohio State University Press, 2007) and editor of *Jane Austen and Masculinity* (Bucknell University Press, 2017) and *Jane Austen and Critical Theory* (Routledge, 2021). He is co-editing the first scholarly edition of William Delisle Hay's *Doom of the Great City* (1880) for the West Virginia University Press *Salvaging the Anthropocene* series and a new edition of Richard Jefferies's *After London* (1885) for Clemson University Press.



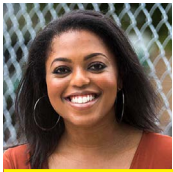
**Dan
Law**

Dan Law is the Associate Director of The Andy Warhol Museum (The Warhol). The Warhol's mission is to inspire and engage through the life, art, and legacy of Andy Warhol, with the world's largest collection of Warhol art and archives. As Associate Director, he serves as a senior leader and manager of the museum and leads one of the city's most transformative projects dedicated to arts and economic development: The Pop District. An \$80 million project, The Pop District is a programmatic and physical expansion of The Andy Warhol Museum.



**Andrea
Bakewell
Lowery**

Andrea Bakewell Lowery, a preservationist with more than 20 years of experience, has served at the Pennsylvania Historical and Museum Commission (PHMC) most recently as chief of the agency's Division of Architecture and Preservation. She managed the budget for PHMC's capital improvements across the state and spearheaded the agency's master planning initiatives.



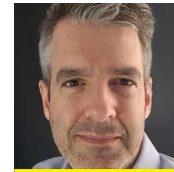
**Genna
Styles-
Lyas**

Genna Styles-Lyas AEP6 Director, Community Engagement & Equity, Genna's key responsibilities include liaising between community partners and national consultants; developing and implementing resources that support engagement with the research study across cultural and arts organizations, especially those serving and centering on BIPOC communities; and all other aspects of the survey including the post-study evaluation. Genna earned her Doctorate in Education in Out of School Learning with a focus on Teaching Artists in marginalized communities from the University of Pittsburgh.



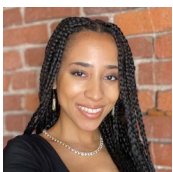
**Jim
McCormick**

Jim McCormick has been with Your Part-Time Controller since 2013, working as an Associate and currently a Manager in the Philadelphia office. At YPTC, Jim wears many hats including CFO client services, training, recruiting, sales, and business development. Jim came to YPTC with a passion for helping nonprofits, looking to utilize his vast, ten plus years of accounting experience. His areas of expertise, established by prior work experience in various industries include financial services, staffing, retail, franchise sales, real estate investment, and private equity. Jim holds a Bachelor of Business Administration from Temple University, Fox School of Business.



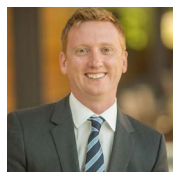
**John
Orr**

John Orr is the Executive Director of Art-Reach in Philadelphia, an impact-focused advocacy organization dedicated to making the arts accessible to people with disabilities. On a state level, Orr was appointed by Governor Wolf as a Councilmember of the PA Developmental Disabilities Council in 2022, and reappointed by Governor Shapiro to the Board of PA Humanities in 2023. On a local level, Orr is a Board Member for the Philadelphia Cultural Fund and serves as a mayoral appointed Commissioner on the Mayor's Commission for People with Disabilities in Philadelphia. Orr identifies as neurodivergent and relies on his lived experience to support his professional efforts.



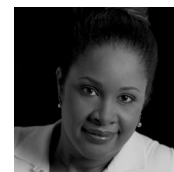
**Morgan
Overton**

Morgan Overton has spent the last decade working toward racial, gender, and economic justice. Through her service across government, philanthropic, and nonprofit sectors, Morgan has championed lived experience as expertise in the pursuit of collective impact. Morgan currently serves as Workforce Director of CREATE PA: Pittsburgh Film and Theater Works—a new partnership between Pittsburgh Public Theater and the Pittsburgh Film Office to grow, diversify, and retain crew-work talent for the film, theater, and related arts industries of Pittsburgh and Allegheny County. Morgan is also a visual artist.



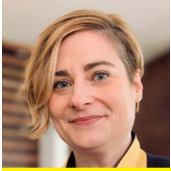
**Dominic
Packer**

Dr. Dominic Packer is the Associate Vice Provost for Research in the Arts, Humanities, and Social Sciences, and a Professor of Psychology at Lehigh University. He is the implementation lead for a major initiative in Lehigh University's new strategic plan focused on strengthening the research environment, which includes a renewed focus on forging strong and effective partnership with external stakeholders. Dominic is the co-author of a recent book, *'The Power of Us: Harnessing Our Shared Identities to Improve Performance, Increase Cooperation, and Promote Social Harmony.'*



**Dana
Payne**

Dana Payne, Director of DEI Initiatives, Diverse Cultures & Heritage for the Pennsylvania Council on the Arts (PCA), she is responsible for the co-development and implementation of the agency's DEI action plan., management of the Folk and Traditional Arts program and management of the agency's Preserving Diverse Cultures Division. She is dedicated to providing artists and organizations with the support, tools, and resources necessary to achieve & maintain sustainability; and to creating and fostering initiatives guided by the principles of diversity, equity, belonging, and inclusion.



Abbi Peters

Abbi Peters is the COO for the PA Wilds Center for Entrepreneurship. She brings 20 years of experience within the creative economy to the Center's leadership team and played a crucial role in establishing the programs that drive the PA Wilds Center's place-based entrepreneurial ecosystem. Abbi serves on the PA Humanities Board, is an Appalachian Leadership Institute graduate and is especially eager to put her experiences to work in her local community of Ridgway, Pa, as an elected councilperson.



Colleen Shogan

Dr. Colleen Shogan is the 11th Archivist of the United States, and the first woman appointed to lead the National Archives. A proud Pittsburgh native, she is a recognized political scientist with expertise in the American presidency, political rhetoric, women in politics, and Congress. Prior to her appointment, she was the Senior Vice President and Director of the David M. Rubenstein Center at the White House Historical Association, and she served as a legislative assistant in the United States Senate and as a senior executive at the Library of Congress. Dr. Shogan was the Vice Chair of the Women's Suffrage Centennial Commission and the Chair of the Board of Directors at the Women's Suffrage National Monument Foundation.



Alison Shott

Alison Shott (she/her) is a community engagement advisor at the Federal Reserve Bank of Philadelphia. At the Philadelphia Fed, Alison manages the Reinventing Our Communities (ROC) Cohort Program, a year-long racial equity training program for cross-sector community groups across the U.S. to apply local solutions to increase opportunity and strengthen local economies. Prior to joining the Philadelphia Fed, Ali was a director at a Philadelphia-based economics and public policy consulting firm where she led projects on neighborhood revitalization, municipal policy, and small business growth. Ali has a Ph.D. from the University of Western Ontario.



Anna Smith

Anna Smith was born and raised in south Bethlehem, where she currently lives with her family. An advocate for neighborhood-driven, asset-based community development and housing justice, she has served as director of Community Action Development Bethlehem from 2016-2020 and from January 2023 to the present. Ms. Smith is a graduate of Tufts University with a B.A. in Economics, American Studies, and Spanish and received an M.S.Ed. in Education, Culture, and Society from the University of Pennsylvania, where she researched the evolution of community engagement in higher education.



Nathan Urban

Nathan Urban, Lehigh's provost and senior vice president for academic affairs, is committed to enhancing Lehigh's strengths in research, making Lehigh a national leader in student outcomes, fostering entrepreneurial activity, and expanding interdisciplinary programs. Urban holds a Ph.D. in Neuroscience, with research focusing on experimental and computational analysis of sensory processing by neural circuits in the mouse brain. Before Lehigh, Urban served as faculty and in leadership roles at the University of Pittsburgh and Carnegie Mellon University. His work was funded by NIH, NSF, DARPA, AFOSR, the Simons Foundation, the Commonwealth of PA, and the Human Frontiers Science Program.



Rachel Wenrick

Rachel Wenrick has worked as a waitress, a roofer, and a teacher. All of these jobs required paying attention. Being a writer has trained her to look for the through-lines that intersect to make a larger narrative. As Founding Director of Writers Room, Drexel's university-community literary arts program, she developed the vision and built the cross-sector partner network needed to realize Second Story Collective, an arts-centered model for intergenerational co-living as an anti-displacement and aging-in-place strategy.



Johntrae Williams

Johntrae Williams, M.Ed. holds a BFA in Film and Theater from University of the Arts, and a Masters of Education in Communication and Media Studies from Cabrini University. He is currently an Executive MBA candidate at Howard University, with a focus in Business, Management, Marketing, and Related Support Services. In August of 2021 Johntrae Founded the Film, Arts, Culture & Tourism Specialist (FACTS), a Non-Profit 501 (c) (3) dedicated to creating a sustainable space for arts programming that can serve chronically under-resourced communities.



Patricia Wilson Aden

Patricia Wilson Aden works with the Cultural Alliance team as President & CEO. Before joining the Cultural Alliance team Patty held leadership positions at several cultural organizations, including the African American Museum in Philadelphia. Most recently Patty served as the President & CEO of The Blues Foundation based in Memphis, Tennessee. Patty holds a BA in History from Spelman College and a MA in Historic Preservation Planning from Cornell University.



Laurie Zierer

Laurie Zierer, executive director of PA Humanities, has strategically sharpened its focus on areas of need in Pennsylvania where the humanities and research can have the greatest impact: youth education, civic engagement, and advocacy. Her recent publications include: "Learning as We Go: How Emergent Process Supports Sustainable Community and Philanthropic Change" in The Foundation Review.

Event Leadership

MARK F. WILSON

Executive Director, Zoellner Arts Center

ISABEL BARONE

Artistic and Administrative Coordinator,
Zoellner Arts Center

NATASHA DE LUNA

Director of Corporate and Foundation
Relations, Lehigh University

KATE BULLARD

Director of Research Development,
Lehigh University

ROBERT FLOWERS

Herbert J. and Ann L. Siegel Dean, Lehigh
University College of Arts and Sciences

CHRIS CARTER

Assoc. Vice President for Government
Relations, Lehigh University

GEOFFREY MOCK

Associate Director for Government
Relations, Lehigh University

AMY COZZE

Lehigh Valley Regional Manager,
U.S. Senator Bob Casey

KRISTIN MAGNOTTA

Director of Outreach,
U.S. Senator Bob Casey

TERESA DENNIS

State Director, U.S.
Senator Bob Casey

JULIA CINQUEGRANI

Policy Advisor, U.S.
Senator Bob Casey

SYDNEY BROOKS

Legislative Correspondent,
U.S. Senator Bob Casey

MAIREAD LYNN

Communications Director,
U.S. Senator Bob Casey

Members

JAMIE DUNLAP

Chief of Creative Catalysts and Life
Long Learning, PA Council on the Arts

NORAH JOHNSON

Director of External Affairs,
PA Council on the Arts

MORGAN KASPROWICZ

Director of Research and Special
Projects, Greater Pittsburgh Arts Council

LAURIE ZIERER

Executive Director, PA Humanities

DAWN FRISBY BYERS

Senior Director of Content and
Engagement, PA Humanities

STUART JASPER

General Manager, the University
of Pennsylvania Annenberg Center

SEAN KING

Managing Director, Lehigh Valley
Arts & Cultural Alliance

MEG MIKOVITS

Assistant Managing Director,
Lehigh Valley Arts & Cultural Alliance

RUSTY BAKER

Executive Director, PA Museums

JOHNTRAE WILLIAMS

Executive Director of FACTS
and Film Commissioner for the
Central PA Film Commission

KHURRAM HUSSAIN

Associate Professor of
Religion Studies, Director,
Humanities Center, Lehigh University

MARY FOLTZ

Associate Professor of English,
Lehigh University

DOMINIC PACKER

Associate Vice Provost for
Research, Lehigh University

STACIE BRENNAN

Curator of Education,
Lehigh University Art Galleries

GAIL BOYD

President of Gail W. Boyd, P.C.
and Gail Boyd Artist Management

ROBERT "BJ" CHERRY

Aging Services Specialist, PA
Department of Environmental Protection

PATRICK FISHER

CEO of the Greater Pittsburgh Arts Council

MONIQUE MORENO

Assistant Director of Community
Investments, Lehigh Valley
Community Foundation

ROBIN DOLBIN

Director, H. Ric Luhrs Performing
Arts Center

BRYAN ZELLMER

Director, KU Presents!

Recognition

